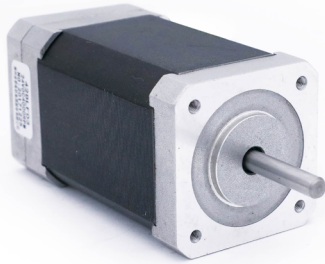


42BLF

BRUSHLESS DC MOTOR



General Specifications

Winding Type	Star
Hall effect angle	120° Electrical angle
Insulation Class	B
Ambient Temperature	-20°C~+50°C
Insulation Resistance	100MΩ Min.500VC DC
Dielectric Strength	600VAC 1 minute
Max Radial Force	28N (10mm from front flange)
Max Axial Force	10N

Technical Specifications

Model	No. of Poles	No. of Phase	Rated Voltage (VDC)	Rated Torque (N.m)	Rated Speed (RPM)	Rated Current (Amps)	Output Power (Watts)	Peak Torque (N.m)	Peak Current (Amps)	Torque Constant (N.m/Amps)	Back EMF Constant (V/kRPM)	Motor Height L (mm)	Motor Weight (kg)
42BLF01	8	3	24	0.063	4000	1.50	26	0.189	4.5	0.042	4.4	47	0.30
42BLF02			24	0.130	4000	3.10	54	0.390	9.3	0.042	4.4	63	0.45
42BLF03			24	0.188	4000	4.17	78	0.560	12.5	0.045	4.8	79	0.60

* Products can be customized by special request.

* Products can match gearbox 36, 42, 52, 56

Wiring Diagram

ELECTRICAL CONNECTION TABLE/接线表			
FUNCTION/功能	COLOR/颜色		UL1007 26AWG
+5V	RED	红	
HALL A	YELLOW	黄	
HALL B	GREEN	绿	
HALL C	BLUE	蓝	
GND	BLACK	黑	
PHASE A	YELLOW	黄	
PHASE B	GREEN	绿	
PHASE C	BLUE	蓝	

